

新濠影滙
STUDIO CITY

STUDIO CITY • WHERE ENTERTAINMENT SOARS TO NEW HEIGHTS

INTRO

WELCOME TO STUDIO CITY

At Studio City, glamor is always in style and you're the star of the show! Boasting Macau's most diversified mix of entertainment, you'll revel in excitement, opulence and adventure at our cinematic themed resort. Guests can explore a mix of retail, dining, event and lifestyle experiences. Located in the bustling heart of Cotai, Studio City is the closest resort to the Hengqin Port and is conveniently connected to the LRT station by a pedestrian bridge.



HOTEL

HOTELS & FACILITIES

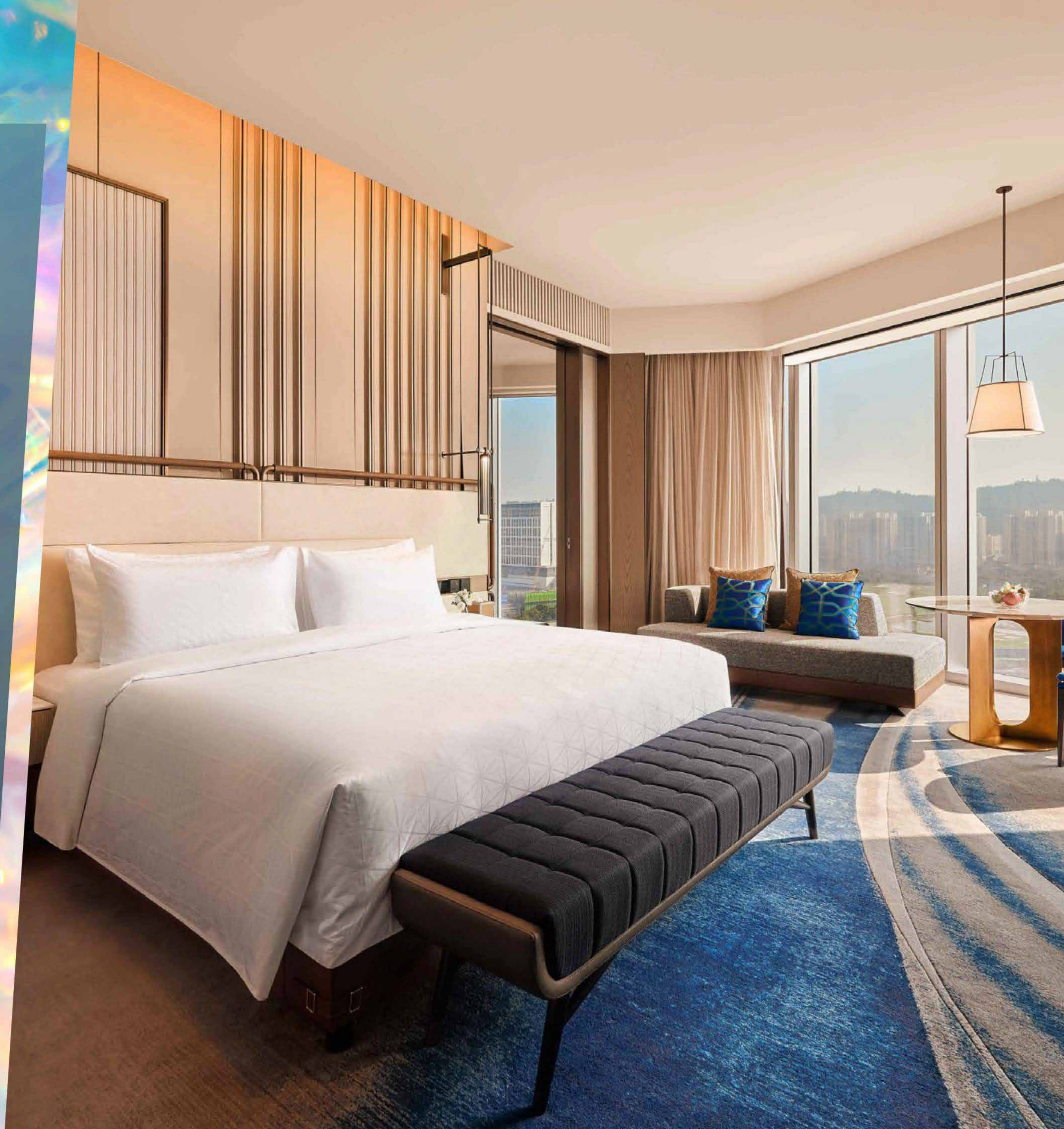
Stay the night, live like a star



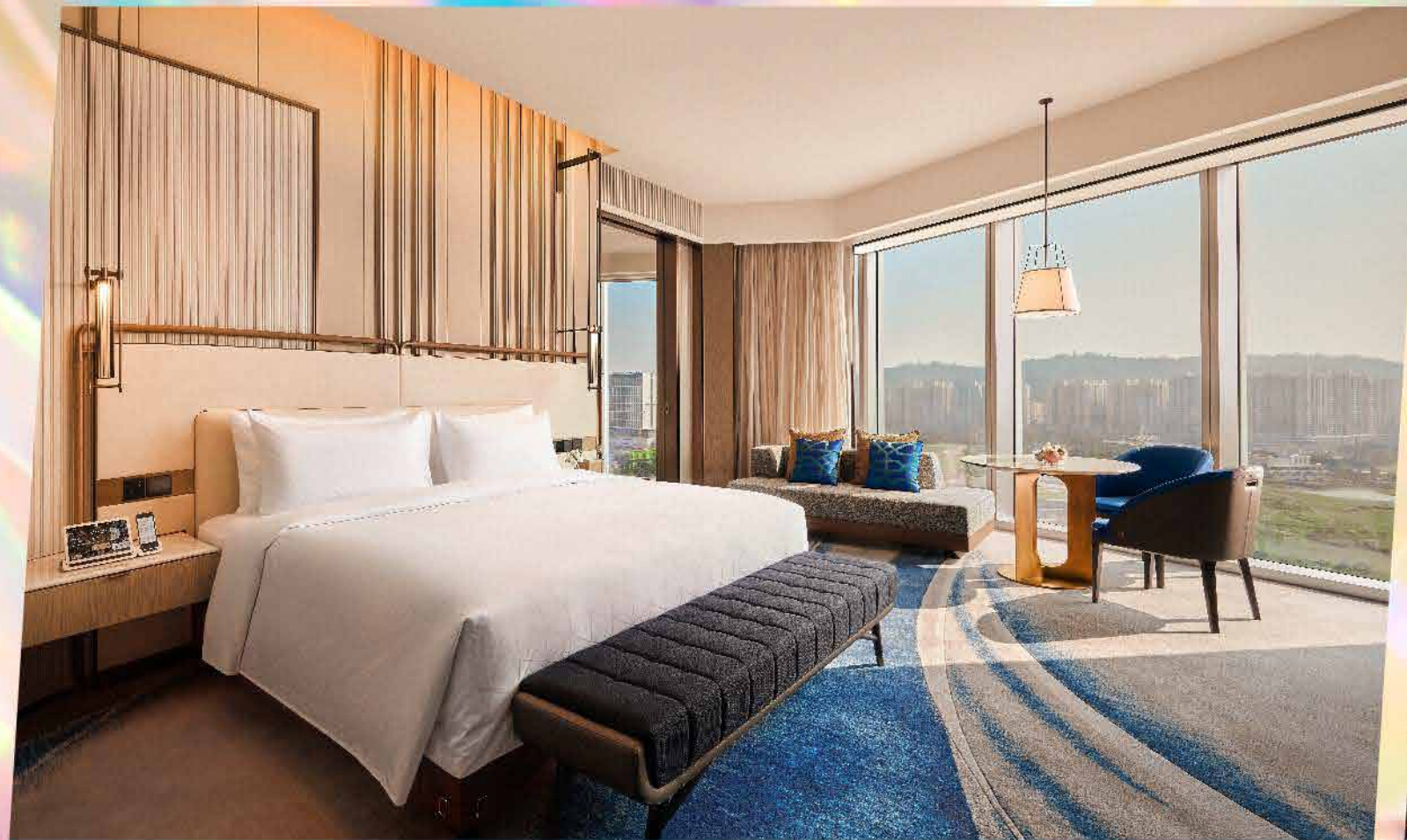
EPIC TOWER

EPIC TOWER

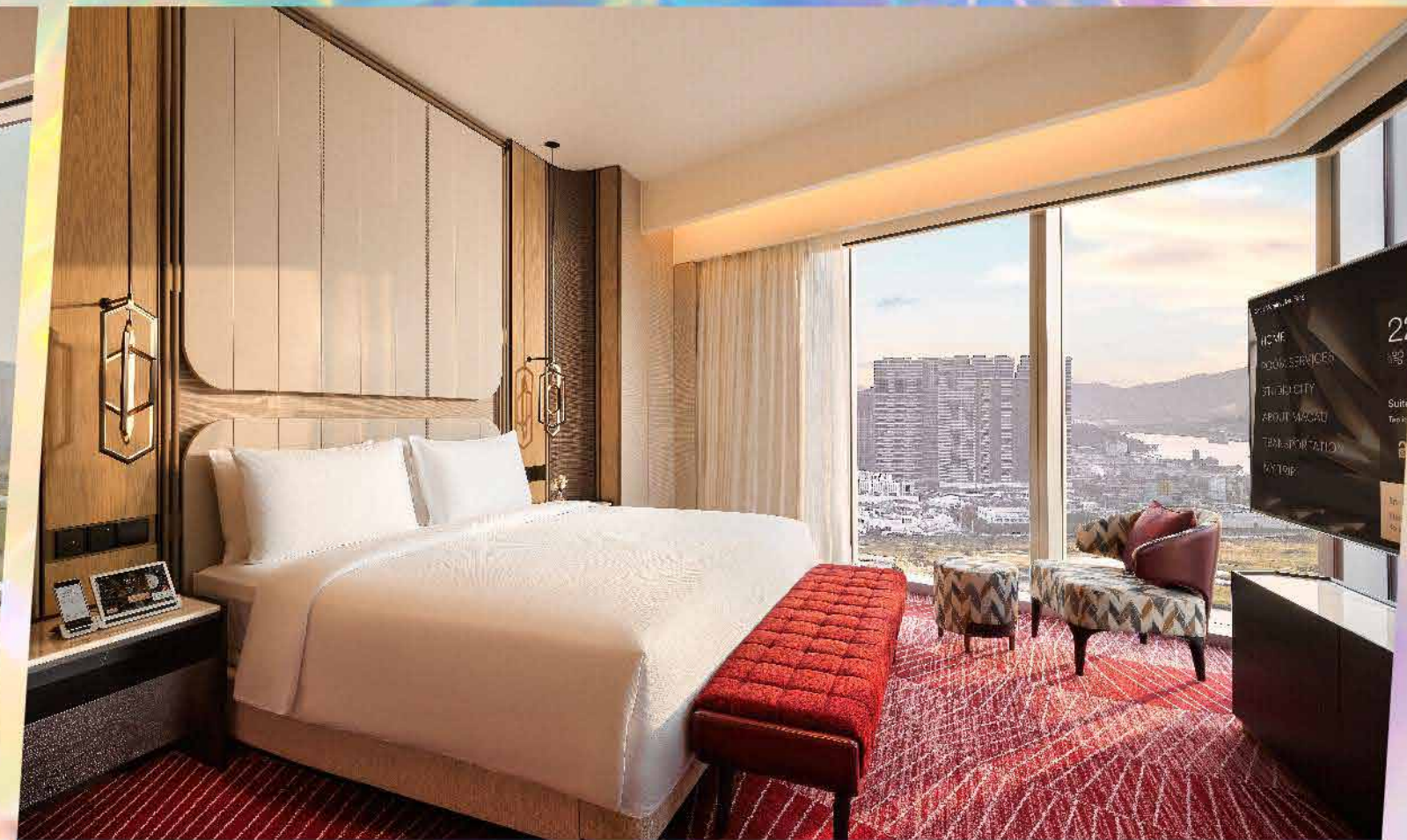
Indulge in a getaway fit for modern-day royalty in an opulent suite at our new Epic Tower. Our most luxurious hotel yet, Epic Tower features 338 sumptuously appointed suites equipped with the MelSuite system, accessed through a fully customized digital tablet. As our guest, you'll enjoy lavish comforts and our highest level of service. Reinvigorate yourself at the pool and fitness center, or simply unwind in an infrared room with Himalayan salt or a pampering treatment at The Spa.



EPIC TOWER



EPIC SUITE



EPIC GREENVIEW SUITE



EPIC SUPERIOR SUITE



EPIC TWO-BEDROOM GREENVIEW SUITE

STAR TOWER

STAR TOWER

Awarded 5 Stars by the Forbes Travel Guide, Star Tower offers over 600 suites with different suite types to cater to every occasion.

Your star treatment begins during your personalized check-in.

Make your stay complete with a dip in the indoor pool, a workout at the fully equipped fitness center and some exquisite pampering at Zensa Spa.



STAR TOWER



STAR PREMIER SUITE



STAR SUITE



STAR EXECUTIVE SUITE



STAR GRAND SUITE

CELEBRITY
TOWER

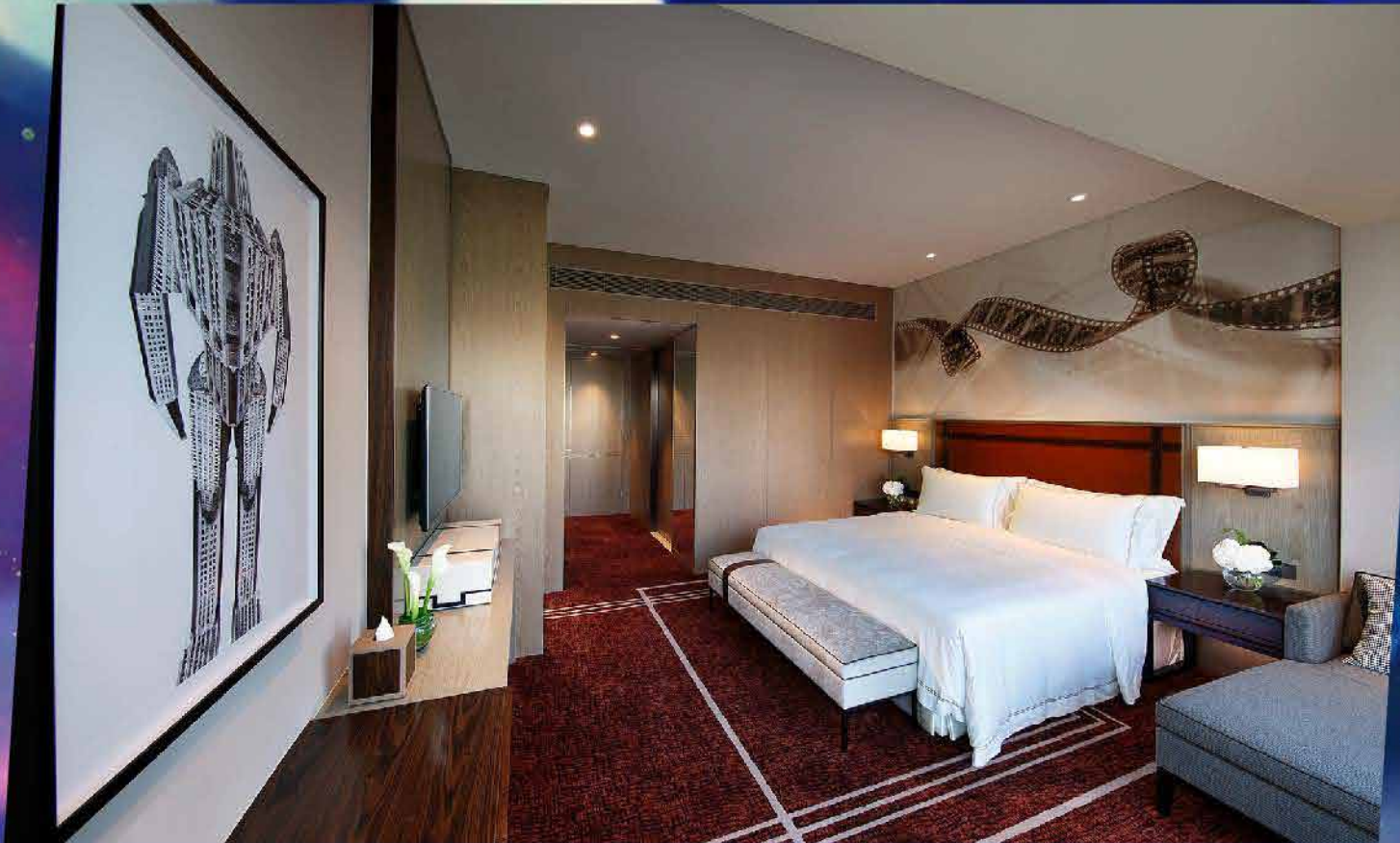
CELEBRITY TOWER

The elegantly furnished Celebrity Tower is themed around movies.

Its 1,000 chic rooms and suites are divided into different types to suit all tastes. Start your day with a workout in the well-appointed fitness center. Visit the beauty salon for a refreshing look. While staying with us , you can also enjoy a relaxing swim and sunbathe at the outdoor pool.



CELEBRITY
TOWER



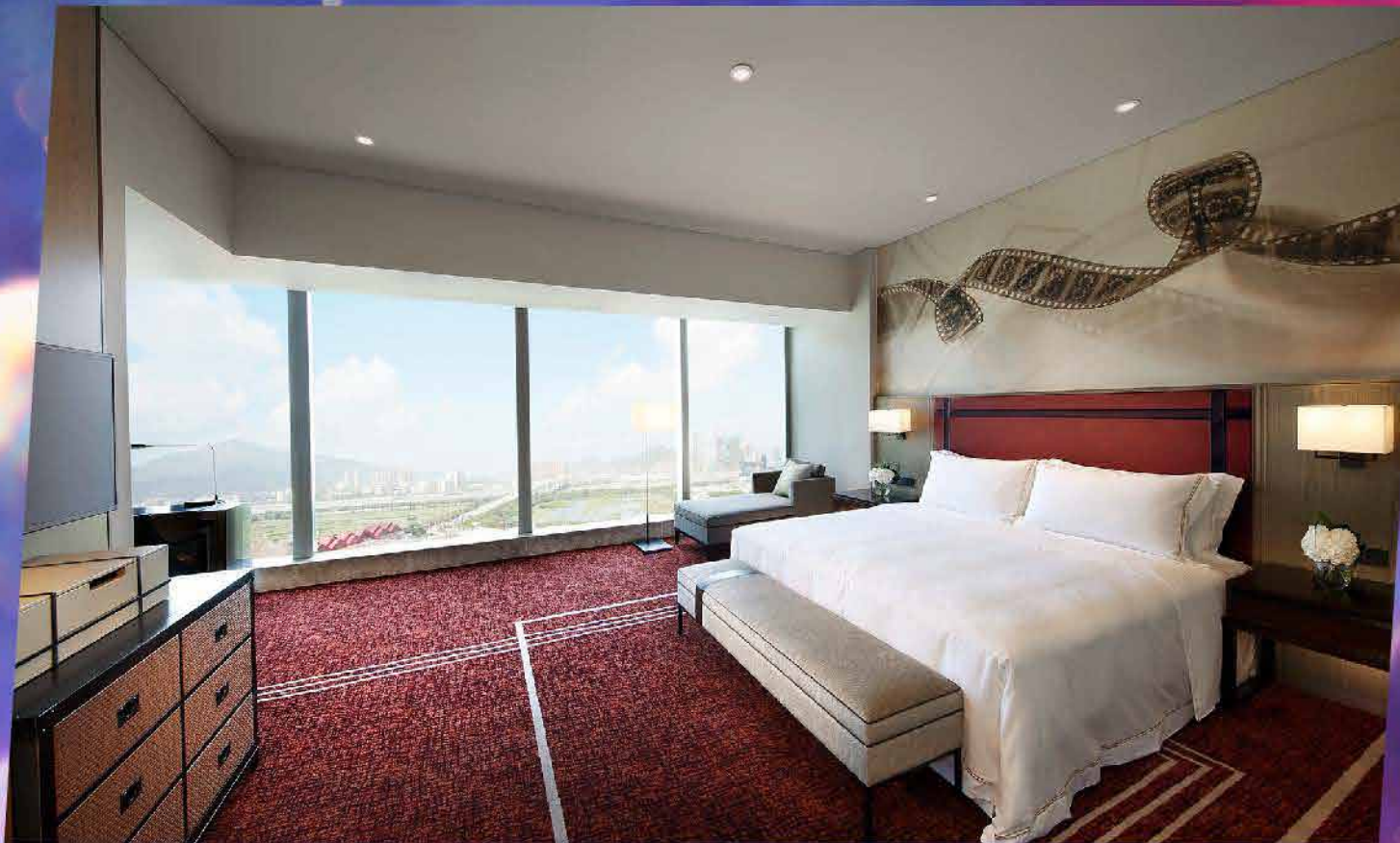
CELEBRITY ROOM



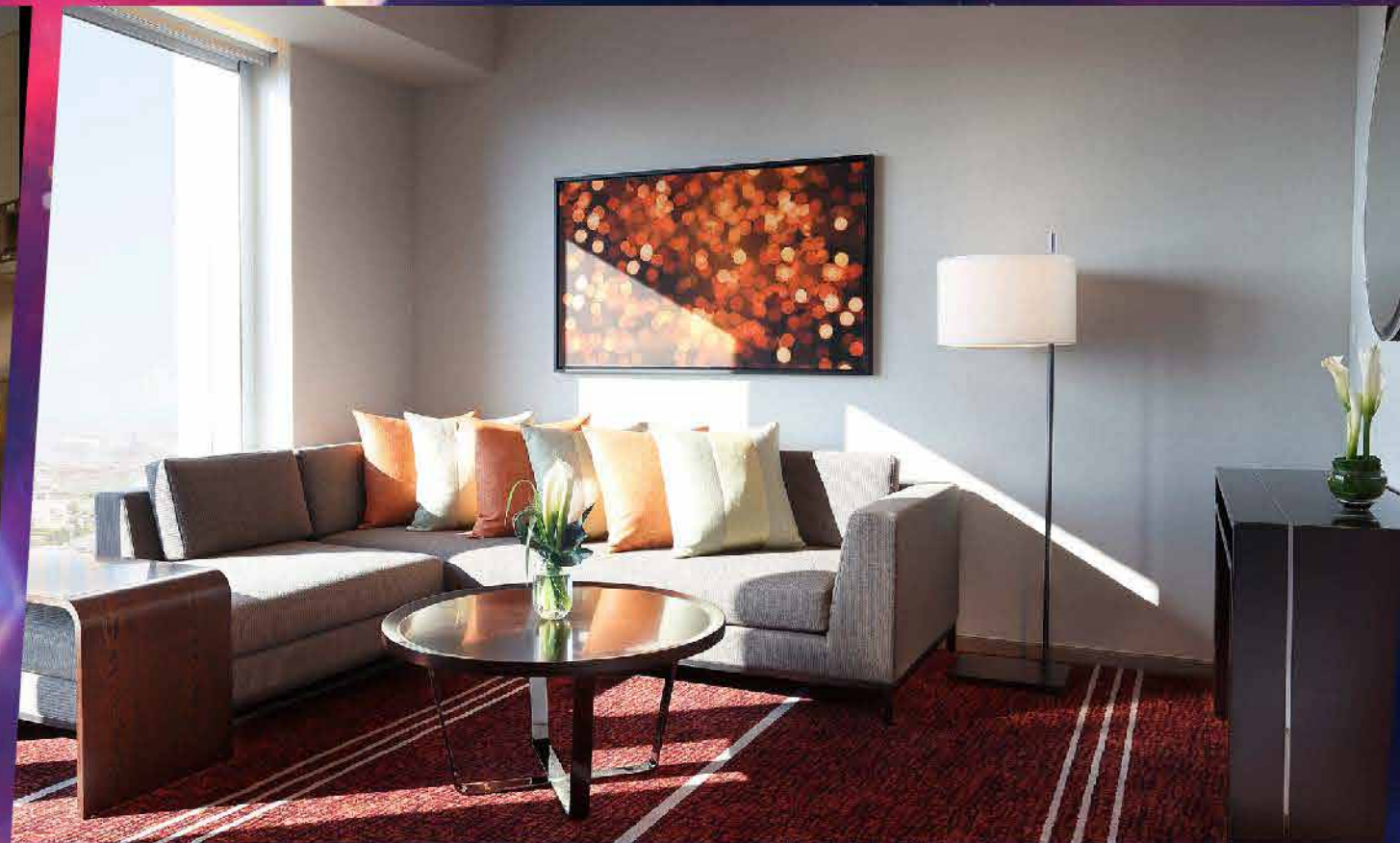
CELEBRITY VISTA ROOM



CELEBRITY PREMIUM VISTA ROOM



CELEBRITY DELUXE ROOM



CELEBRITY SUITE



CELEBRITY COTAI VISTA SUITE

ENTERTAINMENT

ENTERTAINMENT

Unparalleled entertainment, unlimited fun



WATERPARK

WATER PARK OUTDOOR AREA

THE MOST EXCITING WATER PARK IN MACAU

When the sun's out, the fun begins, open all summer long for the whole family. Attractions include the five sliders of Highpoint Twister, anchored to a 20m high tower, 62 interactive water features, the Golden Bucket which regularly tilts to drench anyone beneath it, Little Lagoon for the kids and a rainforest-themed water journey across the resort grounds.



POOLSIDE PARTY COMBOS

- FAMILY TIME
- WATER PARK GETS TOGETHER
- CHILL PARTY
- FIESTA PARTY

WATERPARK

WATER PARK INDOOR AREA

ENDLESS SPLASHY FUN ALL YEAR LONG

Splash in and out with unlimited fun! Get ready for an awesome time at Macau's only indoor space-themed water park, offers nonstop fun with a consistent year-round temperature of 30 degrees Celsius. Explore 16 exhilarating attractions, including an adrenaline-pumping water coaster with steep up and down twists, the city's only surf simulator, seven slides and two wave pools, a sky pool spans from indoor to outdoor, a 246-meter action river, a 3.7-meter deep pool with diving platforms and 5-meter high rock climbing zone.



POOLSIDE PARTY COMBOS

- FAMILY TIME
- SPLASH-TACULAR PACKAGE
- CHILL PARTY
- FIESTA PARTY

OUTDOOR POOL



OUTDOOR POOL

Exclusive to hotel guests, our stunning outdoor pool is a haven for water lovers and sun worshippers alike. Enjoy a special cocktail or mocktail by this azure gem. Our private cabanas are islands of tranquility for those looking to relax.

STUDIO CITY
CINEMA



STUDIO CITY CINEMA

*THE FIRST "DOLBY CINEMA" IN
HONG KONG AND MACAU, ONLY AT STUDIO CITY*

Studio City Cinema contains nine houses, including the first Dolby Cinema in Hong Kong and Macau, as well as five VIP houses, one double house, one MX4D sensory house and one regular house. The Dolby Cinema combines the immersive sound of Dolby Atmos® and the remarkable picture of Dolby Vision® in a special theater designed by Dolby to deliver the most immersive experience possible. The other houses are reupped with high-quality Dolby sound systems and Real-Laser 4K projection, including three houses with Dolby Atmos.

The House 2 Double House features double seats with adjustable reclining angles and is equipped with wireless and wired charging facilities, allowing the audience to enjoy a luxurious experience. Guests at VIP Houses can enjoy unlimited popcorn and soft drinks, all while being attended to by our friendly service ambassadors. With exclusive amenities and a luxurious atmosphere, Studio City Cinema promises a truly exceptional audio-visual experience.



DOLBY CINEMA



DOUBLE HOUSE



VIP HOUSE

SUPER FUN
ZONE



SUPER FUN ZONE

DISCOVER THE MOST UNIQUE PLAYGROUND IN MACAU

Blast into 5 themed fun zones covering 29,600 square feet of pure excitement, leading to a world of discovery!

The 4 - level Super Fun Zone is capable of hosting up to 500 people. Divided into 5 zones - Mountain, Forest, Under the Sea, Outer Space and Space Station - it's a space for kids of all ages to climb, jump and explore a wide range of experiences.

A low-angle, upward-looking photograph of the Golden Reel roller coaster. The structure is a massive, yellow-painted steel lattice tower with a figure-eight track. Numerous silver, steampunk-themed train cars are suspended from the track, some with their doors open. The background shows a clear blue sky and a distant cityscape with a prominent skyscraper. The overall aesthetic is industrial and cinematic.

GOLDEN REEL

GOLDEN REEL

Let your fortunes soar to new heights on the world's highest figure-8 Ferris wheel and admire the breathtaking views of the city 130 meters up in the air.

Born from an epic Hollywood-inspired tale of two asteroids careering through Studio City's two Art Deco hotel towers, the iconic landmark features 17 spacious steampunk-themed cabins, each accommodating up to 10 people.

A skateboarder wearing a black helmet, a white t-shirt with green text, blue jeans, and black protective gear is captured mid-air, performing a trick on a black skateboard. The skateboard has white wheels and a red logo. The background features a modern building with a glass facade and a large, ornate golden structure. The scene is set on a rooftop skatepark.

SKATEPARK

STUDIO CITY SK8TE PARK

MACAU'S FIRST ROOFTOP SKATEPARK

The Studio City Sk8te Park spans an impressive 1,200 square meters designed by the team behind the Olympic extreme sports venue. Experience the thrill of the park's 8-shaped double bowl, caters to the four major extreme sports: skateboarding, BMX, scootering, and aggressive inline skating.

LEGEND HEROES
PARK



LEGEND HEROES PARK

THE NEXT GENERATION PLAYGROUND

A thrilling Tech-based Entertainment (TBE) Park that combines cutting-edge virtual technology with the physical world for an unparalleled immersive experience. Here you will find Virtual & Augmented Reality, Motion Tracking, Projection Mapping, 4D+theater, Video Arcade Games, Sportainment and Cyber Cafe with more than 60 games.

FOOD &
BEVERAGE

FOOD & BEVERAGE

Dishing out the extraordinary
where every bite is amazing





FOOD &
BEVERAGE

GIVE YOUR VACATION FLAVOR AT STUDIO CITY

Studio City is also a foodie's paradise. We offer two Food Streets to delight your senses. Savor a sensational selection of star-studded eateries, ranging from cozy café to Michelin-recognized restaurants, serving both Asian cuisines and Western classics. Or pamper your palate with a sumptuous buffet, authentic Japanese feast, Americian classics or local, home-grown flavors. Spoil yourself with delectable choices and get ready to be tempted!

FOOD & BEVERAGE



PEARL DRAGON

The Michelin-starred restaurant crafts dishes from the finest seasonal ingredients, deeply rooted in Cantonese culinary traditions and masterfully blend in Chaozhou Essence.



GALA

If food is a story, Gala tells a modern tale of celebration with intriguing flashbacks. Inspired by the aesthetics of Art Deco and the golden age of cinema, a stunning ambiance that tantalizes both the eye and palate is created.



KIKU

With premium ingredients sourced directly from around the world, Kiku creates exquisite Japanese cuisine with rich seasonal flavors.



SPOTLIGHT

Spotlight is an Art Deco, cinema-themed food lover's paradise serving buffets with a diverse array of delicious international cuisine, fresh seafood and delicate desserts all day long.

FOOD & BEVERAGE



KIKU RAMEN

Freshly prepared upon order with handmade ramen, each dish is uniquely aromatic and delightfully tempting.



BI YING

Explore the delectable flavors of China's regional cuisines Bi Ying which opens 24 hours, offers an extensive menu highlighted by provincial favorites such as specialties from Sichuan, Hunan, Guangdong and Northern areas.



JOYRIDE DINER

Flashy convertibles, glowing jukeboxes, colorful neon signs - jump into the dazzling world of 50s America and spectacular views of Cotai.



LOUVRE PASTRY & DELI

The European inspired Louvre Pastry & Deli brings together a dazzling array of artisanal breads, pastries, chocolate, desserts and light meals, allowing busy customers to enjoy delicious delicacies on the go.



SPICE ROAD

Excite your taste buds with a colorful and diverse range of Asia's best dishes - from Penang street food and Cantonese roast meat to Macau's favorite stir-fries and tonic soups.

BANQUETS AND
EVENTS VENUE

BANQUETS & EVENTS VENUE

Our Professional Event team
Turns your event into an occasion



**BANQUETS AND
EVENTS VENUE**



BANQUETS & EVENTS VENUE

Featuring an indoor venue of more than 4,000 square meters, Studio City offers the ideal spot for memorable meetings and ceremonies of all sizes, from private banquets and romantic weddings to international conferences and conventions. Our professional team is dedicated to coordinating support and tailoring the venue's layout and settings to perfectly suit your theme and make the event exactly what you envision.

A wide-angle photograph of a grand ballroom. The floor is covered in a complex, swirling pattern of gold, brown, and blue. The ceiling is multi-tiered with recessed lighting and intricate gold-colored designs. The walls are lined with vertical panels and large windows with decorative glass. The overall atmosphere is one of luxury and elegance.

BANQUETS AND
EVENTS VENUE

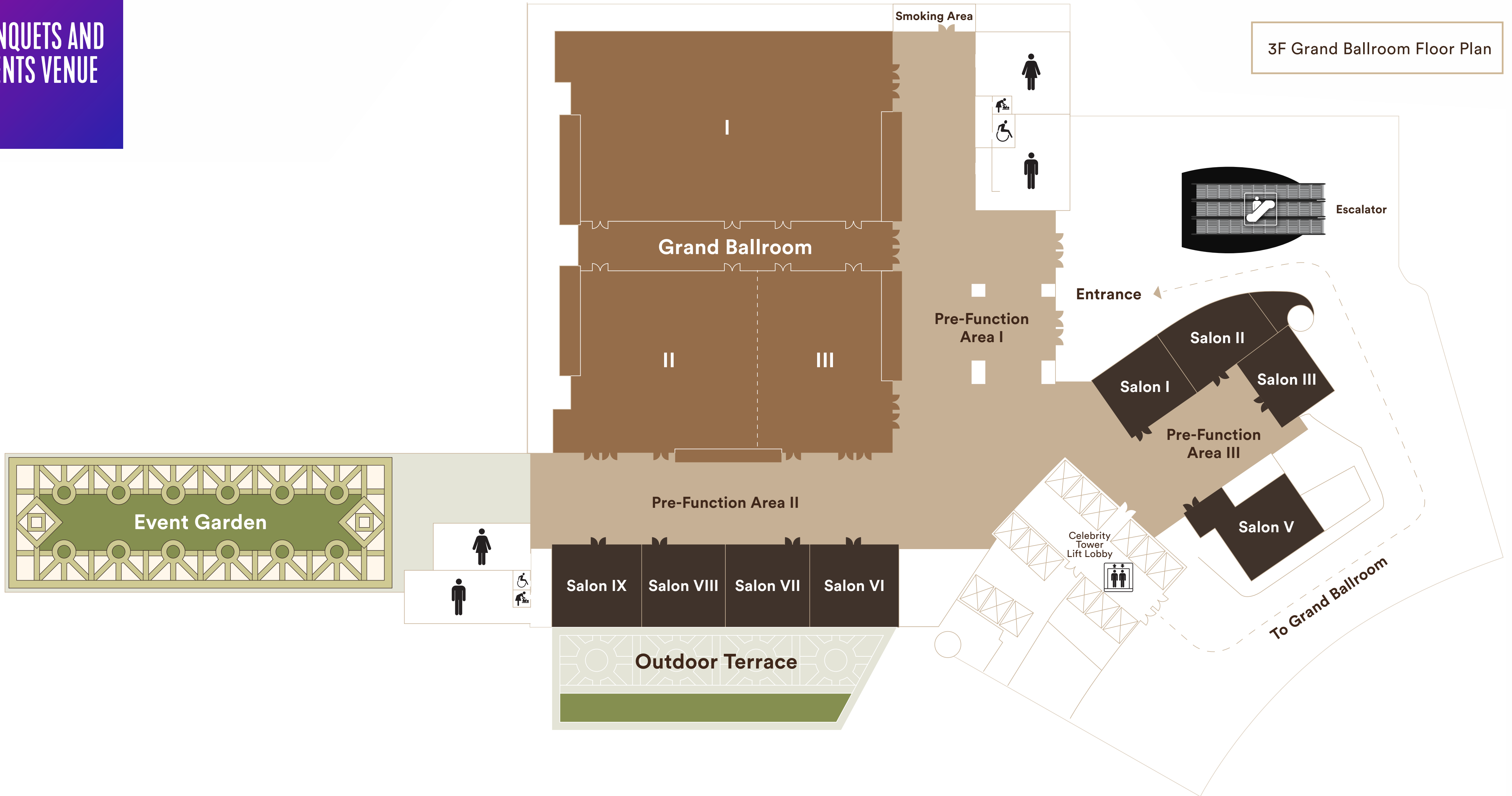
BANQUETS & EVENTS VENUE

The Grand Ballroom space of 1,820 square meters can be configured into three separate ballrooms with a banquet capacity of 1,200 people or a cocktail reception for over 1,500 persons.

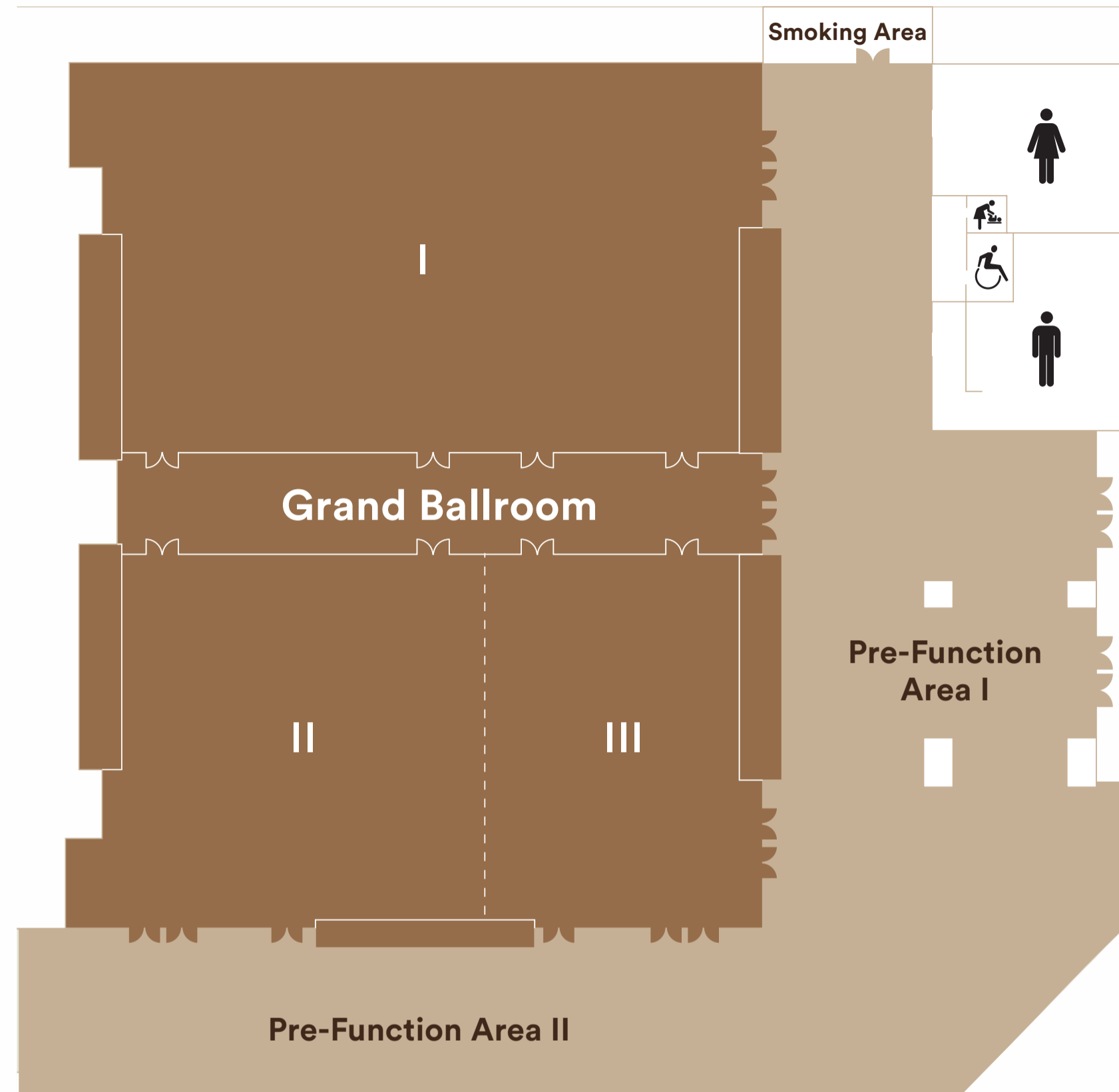
Eight individual salons provide meeting and break-out spaces with extensive pre-function areas. Make your special event an opulent affair, fit for the most famous stars!

BANQUETS AND EVENTS VENUE

3F Grand Ballroom Floor Plan



BANQUETS AND EVENTS VENUE



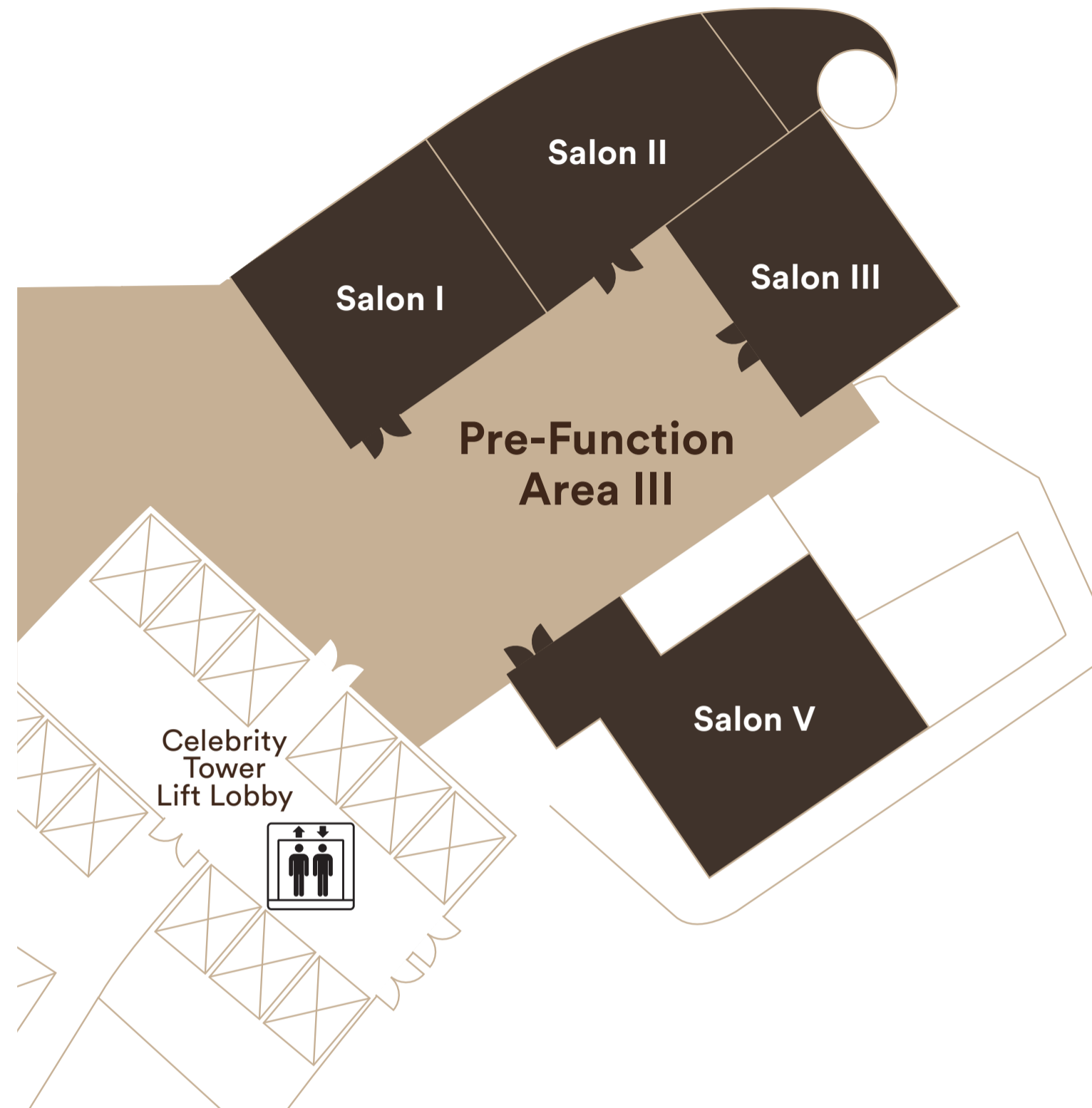
Ballroom Floor Plan



	Size L x W x H (M)	Area (SQM)	Area (SQFT)	Style (No. of Guests)						
				Theater	Classroom	U-Shape	Hollow Square	Boardroom	Banquet	Cocktail
Grand Ballroom	37.0 x 50.0 x 7.0	1,820	19,590	1,836	897	-	-	-	1,200	1,500
Ballroom I	37.7 x 22.3 x 7.0	820	8,826	670	380	90	110	65	504	680
Ballroom II	21.4 x 21.8 x 7.0	450	4,843	468	216	69	90	42	300	350
Ballroom III	15.4 x 21.4 x 7.0	330	3,552	204	162	57	66	42	180	200
Ballroom II + Ballrom III	36.8 x 21.4 x 7.0	790	8,503	670	380	90	110	65	504	680
Event Garden	66x20	1,320	14,208	-	-	-	-	-	200	350

BANQUETS AND EVENTS VENUE

Salon Floor Plan (I, II, III, V)



	Size L x W x H (M)	Area (SQM)	Area (SQFT)	Style (No. of Guests)						
				Theater	Classroom	U-Shape	Hollow Square	Boardroom	Banquet	Cocktail
Salon I	7.2 x 7.7 x 4.4	61	656	40	30	18	24	21	36	50
Salon II	10.0 x 6.6 x 4.4	71	764	50	30	21	24	21	36	50
Salon III	8.1 x 9.0 x 4.4	76	818	50	30	24	30	21	48	50
Salon V	12.5 x 10.6 x 4.4	101	1,087	80	36	24	30	27	48	50

BANQUETS AND EVENTS VENUE

Salon Floor Plan (VI, VII, VIII,IX)



	Size L x W x H (M)	Area (SQM)	Area (SQFT)	Style (No. of Guests)						
				Theater	Classroom	U-Shape	Hollow Square	Boardroom	Banquet	Cocktail
Salon VI	10.0 x 9.2 x 4.4	88	947	84	54	27	30	21	60	70
Salon VII	9.7 x 8.7 x 4.4	88	947	84	54	27	30	21	60	70
Salon VI + VII	19.9 x 9.2 x 4.4	176	1,894	168	96	54	60	51	120	140
Salon VIII	9.8 x 8.7 x 4.4	88	947	84	54	27	30	21	60	70
Salon IX	10.1 x 8.7 x 4.4	89	957	84	54	27	30	21	60	70
Salon VIII + IX	20.1 x 8.7 x 4.4	177	1,905	168	96	54	60	51	120	140

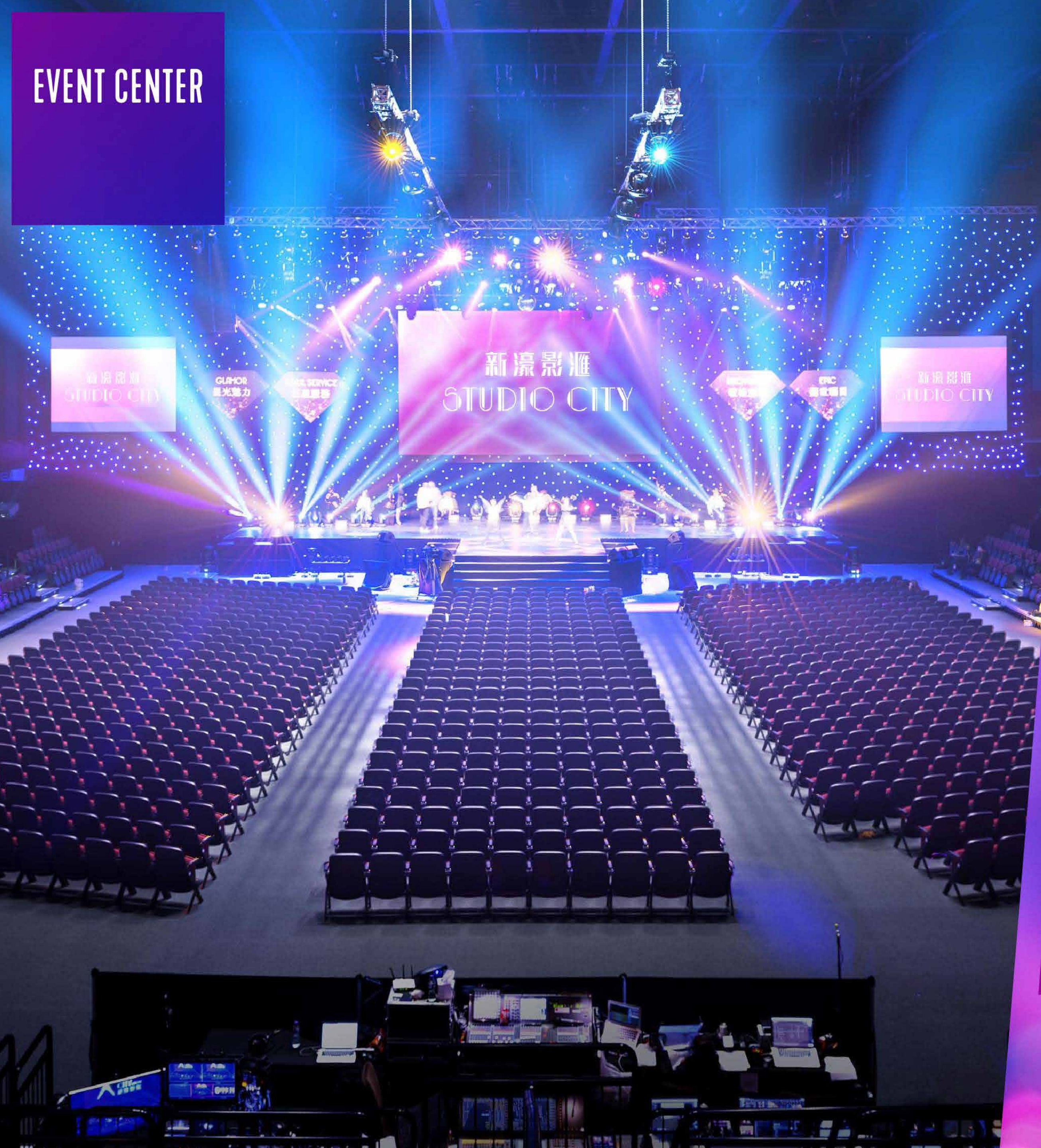
EVENT CENTER

EVENT CENTER

Rock on at Asia's first
Residency Concert Series

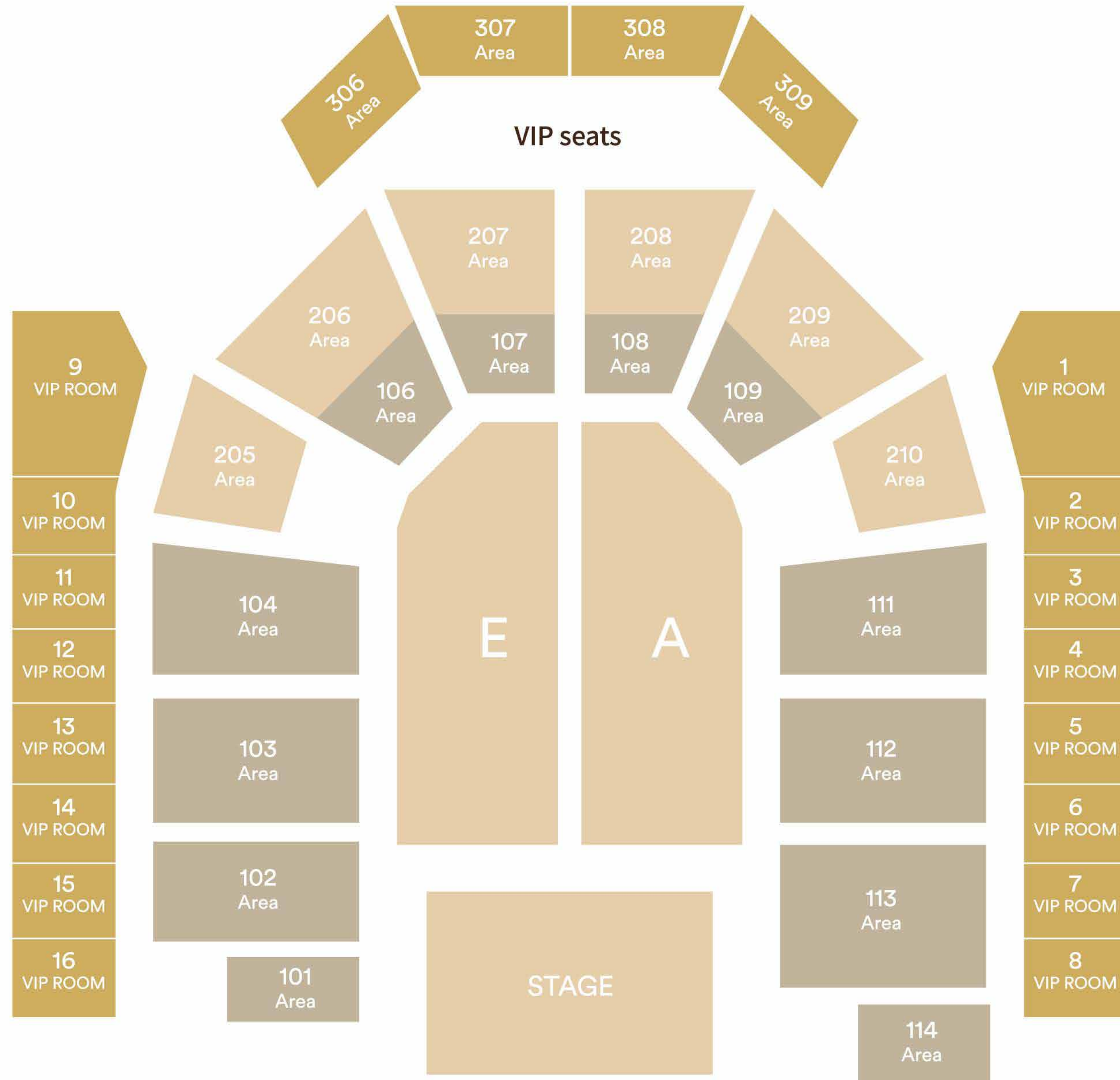


EVENT CENTER



STUDIO CITY EVENT CENTER

Step inside this incredible arena to experience the best in live entertainment. The Studio City Event Center is ideal for concerts, sport, award ceremonies and more. With a capacity of up to 5,000 plush seats, guests can sit in comfort as the excitement unfolds on stage. Many international stars have graced our stage over the years. And in 2003, SCEC launched its Melco Residency Concert Series, a star-studded series of 90 exclusive concerts over 3 years. Headliners include Aaron Kwok, Joey Yung and Leon Lai.



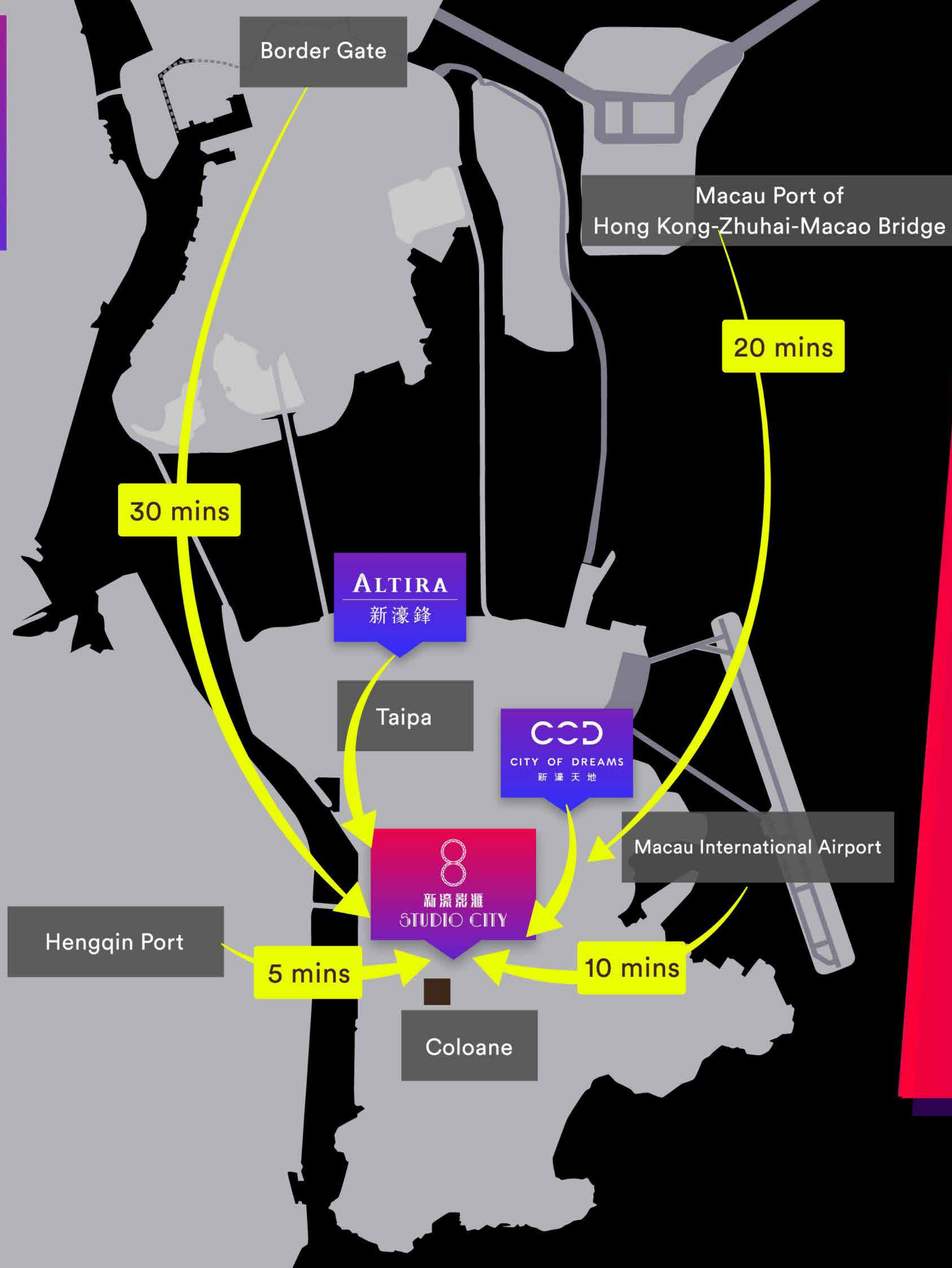
TRANSPORTATION

HOW TO GET HERE

Closest to the port. Far from ordinary.



TRANSPORTATION



SEAMLESS ARRIVAL

Located in Cotai next to Hengqin Port, Studio City truly is at the heart of the excitement. A quick 10-minute ride by free shuttle, car or public transport is all it takes to get here from the Macau International Airport or the Taipa Ferry Terminal. To help guests explore Macau, complimentary shuttles are available between Studio City and other key attractions.

GUEST SHUTTLE BUS SERVICE LOCATIONS

Border Gate / Taipa Ferry Terminal /

Macau International Airport / Hengqin Port /

Inter-property Connection (City of Dreams<>Studio City<>Altria)



STUDIO CITY

新濠影滙